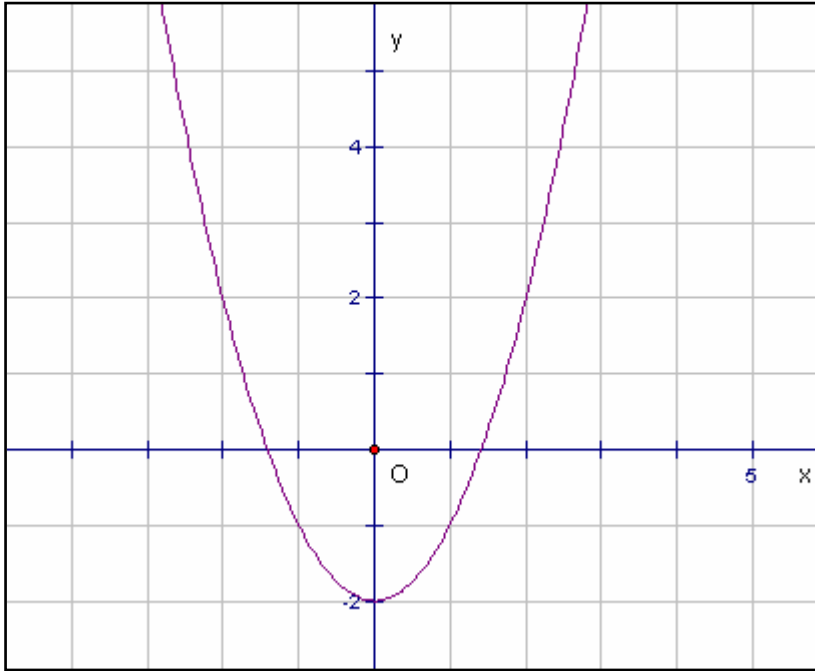


## 6.4 Key Concepts 2 Graphing Non-linear Relations Worked Example

**Example:** Use a table of values to graph the relation  $y = x^2 - 2$ .

**Solution:** The table of values and graph are shown.



$x$	$y$
-2	2
-1	-1
0	-2
1	-1
2	2

**Practice:**

1. Use a table of values to graph the relation  $y = -x^2 + 2$ .
2. Use a table of values to graph the relation  $y = 2x^2 - 1$ .