

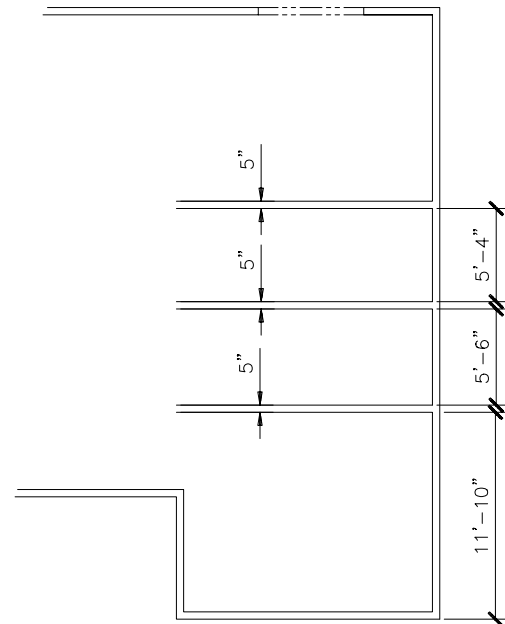
CHAPTER 10 EXERCISES

Open **PLAN.DWG** that you created in Chapter 9. We will begin by drawing the front bedroom.

1. Offset

Offset a horizontal line 11'-10" up from the outer wall. Now *Offset* another horizontal line 5" above that. Use the *Trim* command to clean up the intersection of these lines. Continue to *Offset* horizontal lines according to the dimensions in Figure AR10-1.

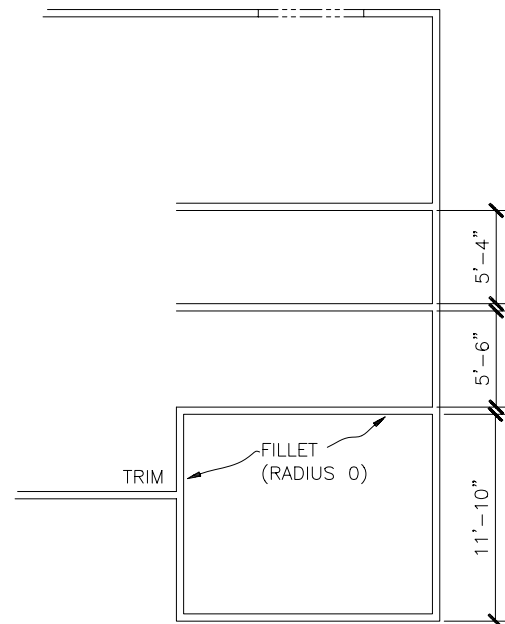
Figure AR10-1



2. Fillet

Use the *Fillet* command with a *radius* of 0 to enclose the front bedroom. *Trim* the wall intersections as shown in Figure AR10-2.

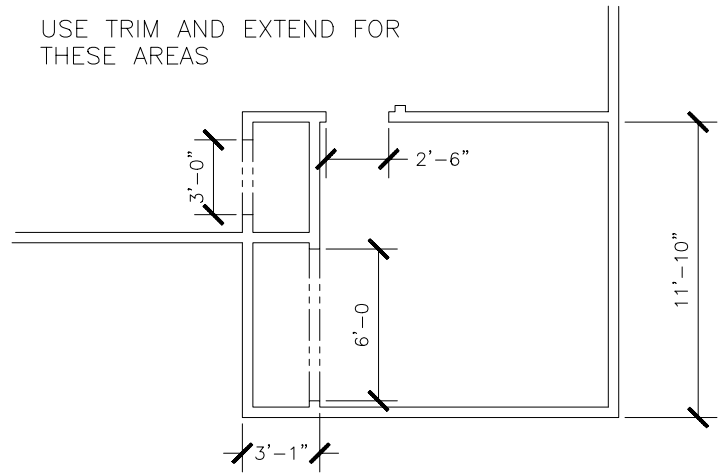
Figure AR10-2



3. Offset, Extend

Lay out the closet by using *Offset* to create a vertical line 3'-1" to the right as shown in Figure AR10-3. *Extend* the line up to the horizontal line and *Offset* a distance of 5" to complete the width of the wall. Use the information given in Figure AR10-3 to complete the closets and the bedroom door.

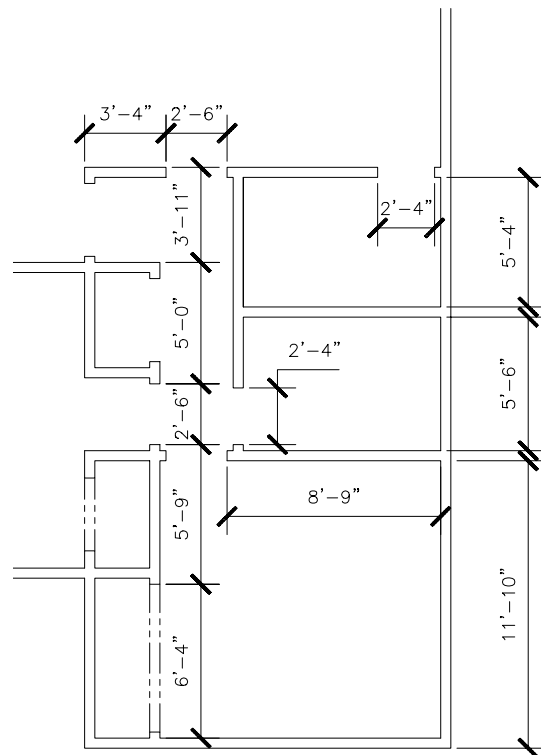
Figure AR10-3



4. Offset, Extend

Create two bathrooms, two closets and the entry into the master bedroom as shown in Figure AR10-4. Use methods similar to those in previous steps to complete the walls.

Figure ARE10-4



5. Offset, Extend

Create the remainder of the interior walls as shown in Figure AR10-5. Use dimensions for closets and door openings as before. *Save* the drawing.

Figure AR10-5

