

CHAPTER 22 EXERCISES

1. Create Attributes

Download the following files from the www.mhhe.com/leach web site:

2040WINDOW.DWG
3030WINDOW.DWG
3050WINDOW.DWG

- A. *Open* drawing 2040WINDOW.DWG and type *Attdef*. In the *Attribute Definition* dialog box fill out the following information under *Attribute*:

Tag: type in **Mark**
Prompt: type in **Enter the mark reference**
Value: type in **A**

In the *Text Options* section enter the following information:

Justification: select **MC**
Text Style: select **Standard**
Height: enter **6"**
Rotation: enter **0**

- B. In the *Insertion Point* section, pick the *Pick Point* button. Attach the attribute just below the *Midpoint* of the window as shown in Figure AR22-1.

Figure AR22-1



2. Create a Second Attribute

- A. Type in *Attdef*. In the *Attribute Definition* dialog box fill out the following information.

Mode: select **Invisible**
Tag: type in **Size**
Prompt: type in **Enter the Size**
Value: enter **2'-0 x 4'-0**

- B. In the *Text Options* section fill in the following:

Justification: **MC**
Text Style: **Standard**
Height: **6"**
Rotation: **0**

- C. Select the *Align below previous attribute* check box.

3. Create the Third Attribute

Repeat the previous steps for the third attribute; however, this time enter **Description** for the *Tag*, type **Enter the Description** for the *Prompt*, and enter **Double Hung** for the *Value*. The rest of the information is the same as step 2. Compare your drawing to Figure AR22-1.

4. Wblock

Type in the command *Wblock*. When AutoCAD prompts for a drawing name, type in **2040ATT.DWG** (the letters ATT will remind you this symbol has attributes). When prompted for a block name, press Enter. For the insertion point select the *Endpoint* of the vertical line. Next, select all the objects and press Enter.

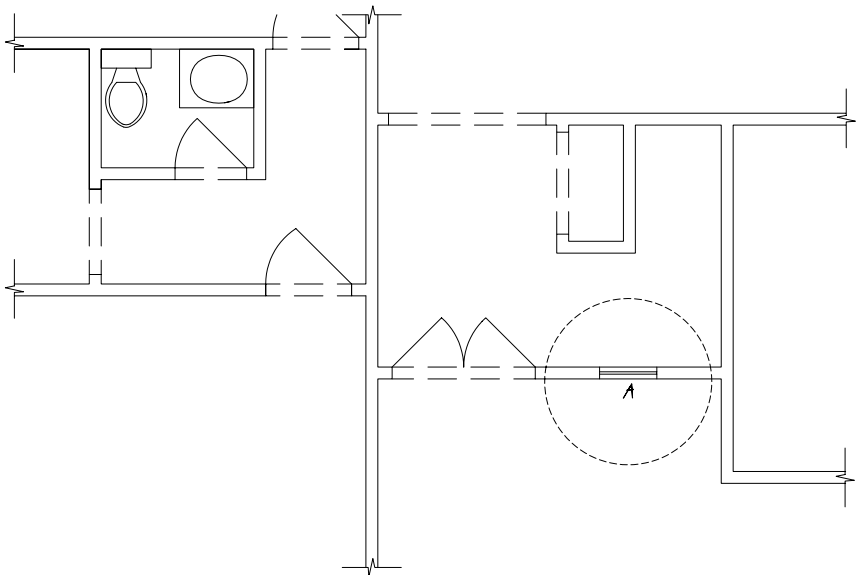
5. Open the PLAN.DWG

A. *Zoom* to the main entry of the house. Draw a short vertical construction line across the midpoint of the wall (just to the right of the door). Now *Offset* the line 12" to the left. This will be the point you will use to insert the 2040 window.

B. Before inserting the 2040 window, set the *ATTDIA* variable to 1.

C. Now *Insert* the 2040ATT window at the endpoint of the construction line. *Save* the drawing. The drawing should look like Figure AR22-2 (circled area).

Figure AR22-2



6. Ddattdef

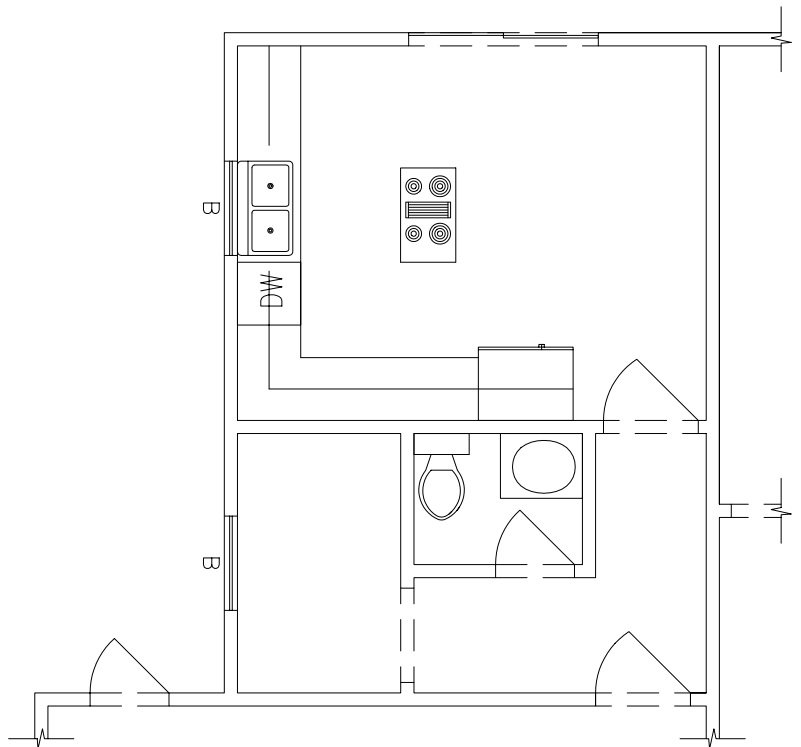
Open 3030WINDOW.DWG and repeat steps 1-4. Remember that the size for this window is 3'-0" x 3'-0" and the value for the *Mark* will be *B*. *Wblock* the window with a file name of 3030ATT.

7. Open PLAN.DWG

The 3'-0 x 3'-0 window will be inserted three places. **Zoom** to the kitchen and laundry area of the floor plan.

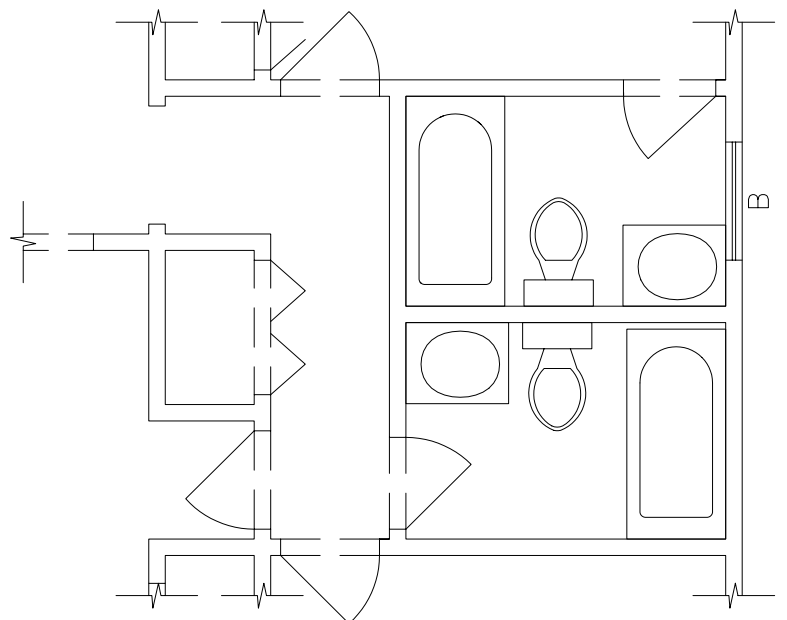
The window in the kitchen should be centered at the kitchen sink. Draw a construction line from the midpoint of the sink extending past the wall. **Offset** this line 1'-6" (half of 3'-0) above the midline. **Insert** the first of the 3'-0 x 3'-0 windows at this location and rotate it **270** degrees. **Insert** the second window in the laundry room centered on the outside wall. See Figure AR22-3.

Figure AR22-3



Insert the third 3'0 x 3'-0 window centered in the wall of bathroom number 1. See Figure AR 22-4.

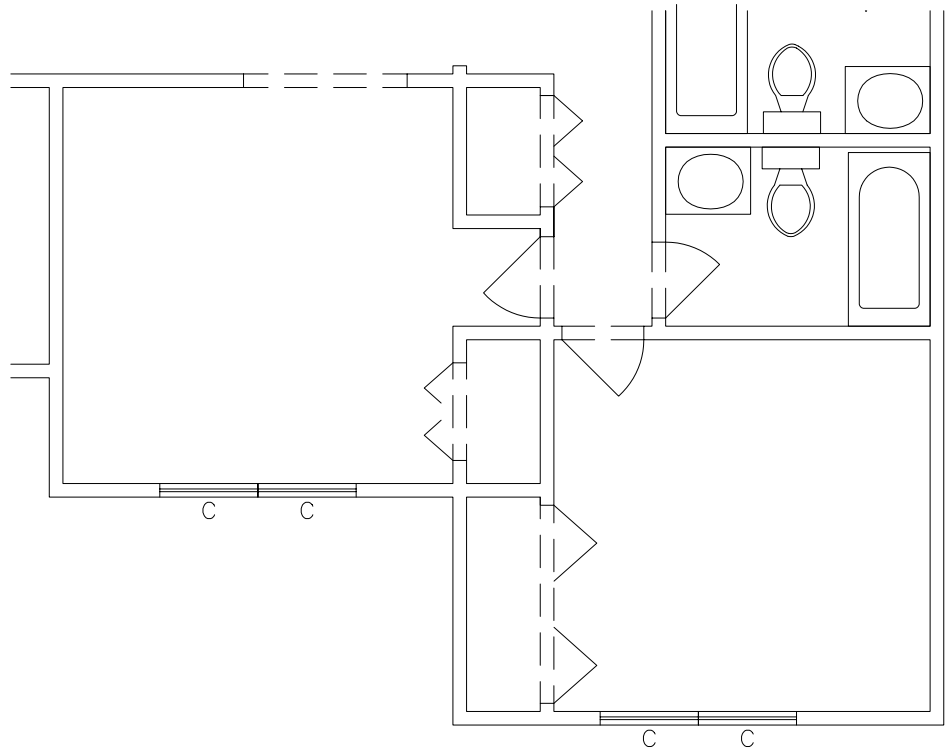
Figure AR22-4



8. More Windows

Open the **3050WINDOW** drawing and assign attributes as described in steps 1- 4. Remember that the **Mark** value should be **C**, and the **Size** value should be **3'-0 x 5'-0**. *Save* as **3050ATT.DWG**. Insert two windows into the bedroom and two into the den (near the bottom of the drawing). See Figure AR22-5. *Save* the drawing.

Figure AR22-5



9. Extracting Attributes to Create a Window Schedule

A. Creating the Template File

The first step in creating a window schedule is to create a template file. The template file specifies what information will be included in the extract file. Open WordPad and type in the following information:

MARK	C001000
SIZE	C012000
DESCRIPTION	C012000

Save the file as **SCHEDULE.TXT**. (Make sure the file is saved as ASCII text.)

B. Creating the Extract File

Open the **PLAN** drawing and type *Atttext*. AutoCAD prompts you to select the type of file you want extracted. Select *Comma Delimited File (CDF)*. Next, AutoCAD prompts for the template file. Select **SCHEDULE.TXT**. Next specify a name for the output (extract) file such as **PLAN.TXT**. Select **OK**. AutoCAD creates the file and reports the number of records in the extract file. In this example there are 8 records. Now that the extract file has been created, examine it by starting WordPad and opening **PLAN.TXT**. The extract file should look like this:

- 'A',2'-0 x 4'-0 ',Double Hung'
- 'B',3'-0 x 3'-0 ',Double Hung'
- 'B',3'-0 x 3'-0 ',Double Hung'
- 'C',3'-0 x 5'-0 ',Double Hung'
- 'C',3'-0 x 5'-0 ',Double Hung'
- 'C',3'-0 x 5'-0 ',Double Hung'
- 'C',3'-0 x 5'-0 ',Double Hung'
- 'B',3'-0 x 3'-0 ',Double Hung'

C. Delete the duplicate rows of "B" and "C" since only one listing is needed for each. The resulting list should appear as follows:

- 'A',2'-0 x 4'-0 ',Double Hung'
- 'B',3'-0 x 3'-0 ',Double Hung'
- 'C',3'-0 x 5'-0 ',Double Hung'

Save the file.

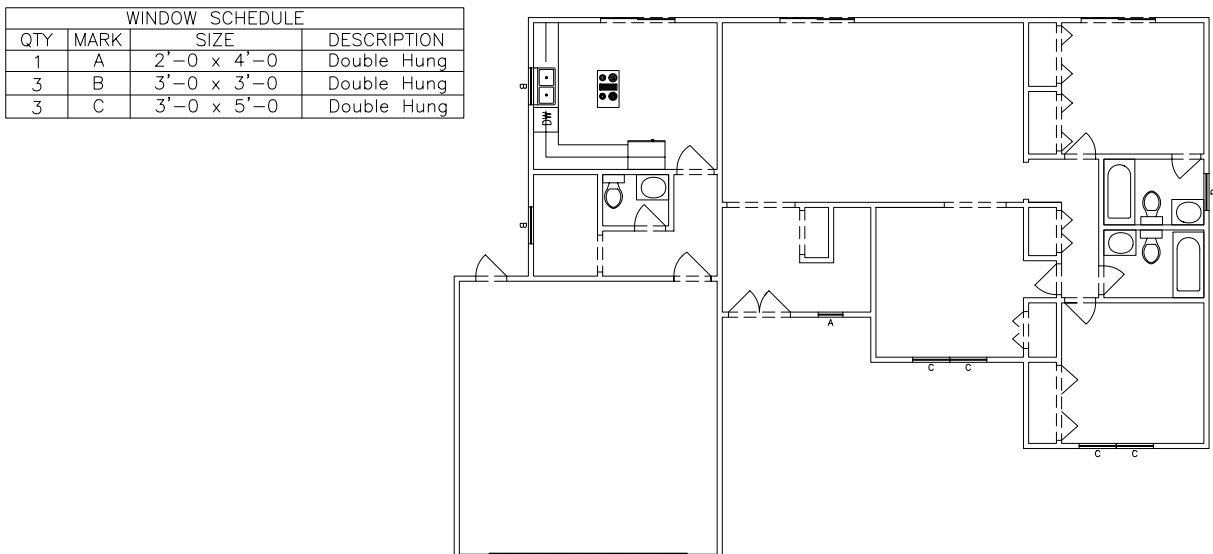
10. Open PLAN.DWG

Open the drawing so you can import the text file into the drawing. Type in the command *Mtext*. When AutoCAD prompts for the first and opposite corners of the *Mtext* window, select an open area on the left side of the drawing. When the *Multiline Text Editor* appears, select the *Import Text* button, then select the **PLAN.TXT** file. Clean up the text and add a table around it, similar to the following table. See Figure AR22-6. *Save* the drawing.

Window Schedule

Qty.	Mark	Size	Description
1	A	2'-0 x 4'-0	Double Hung
3	B	3'-0 x 3'-0	Double Hung
3	C	3'-0 x 5'-0	Double Hung

Figure AR22-6



11. Additional Floor Plan

- A. Complete the floor plan shown in Figure AR22-7.
- B. Add each of the windows symbols used in the previous exercises.
- C. Complete the window schedule from steps 9 and 10.
- D. Save the drawing as **LOFT**.

Figure AR22-7

