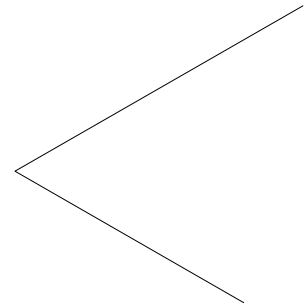


CHAPTER 25 EXERCISES

1. Construct an isometric drawing of the kitchen

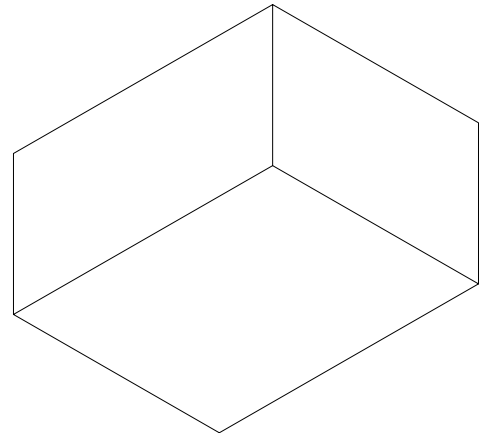
- A. Begin a new drawing using the **ARCHB** drawing template created in Chapter 13. Set *Snap Style* to *Isometric* and begin the drawing by changing to the left isoplane (**Ctrl+E**). Issue the *Line* command and begin the line by picking a point in the lower portion of the drawing area. For the next point of the line, enter **@11'-9" <150**.
- B. Change to the right isoplane (**Ctrl+E**) and draw the next *Line* selecting the endpoint of the existing line, then type in the coordinate value of **@14'-10" <30**. Use grips to move and copy the additional two lines so that a closed isometric rectangle is formed. See Figure AR25-1.

Figure AR25-1



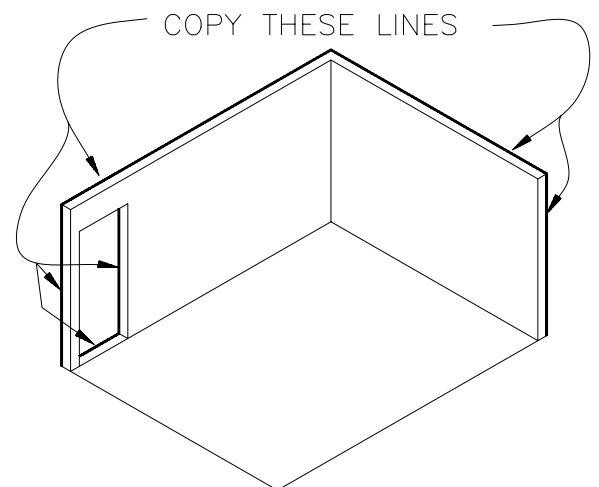
- C. Next draw a vertical *Line* from the endpoint at the top corner and enter the coordinate value of **@8' <90** for the other end of the line.
- D. Use grips to copy the vertical line to the other two corners. (Note: You will not draw two walls so you can see the inside of the kitchen.) Next copy the two isometric lines to the top of the vertical lines. See Figure AR25-2.

Figure AR25-2



- E. Now create the door opening. This door is 2'-9" wide, has a height of 6'-8", and is located 6" away from the wall. First *Copy* the vertical line in the corner to a distance of 6" and an angle of 30. This is the starting line of the door. The next line represents the width of the door, copy the new line at distance of 2'-9" at an angle of 30. To complete the height of the door, *Copy* the bottom line a distance of 6'-8" and an angle of 90.
- F. Now put in the wall thickness. All of the walls are 6" thick. See Figure AR25-3 for the lines to copy.

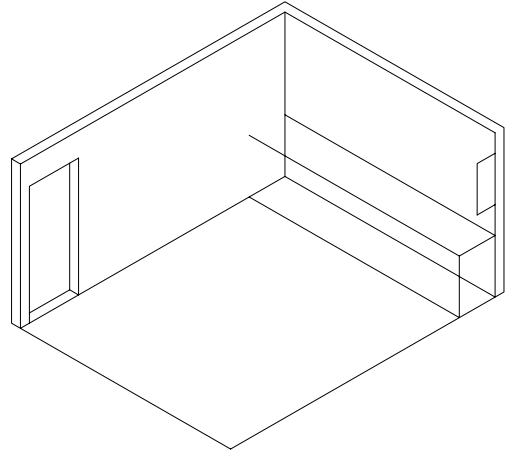
Figure AR25-3



2. Add the kitchen cabinets.

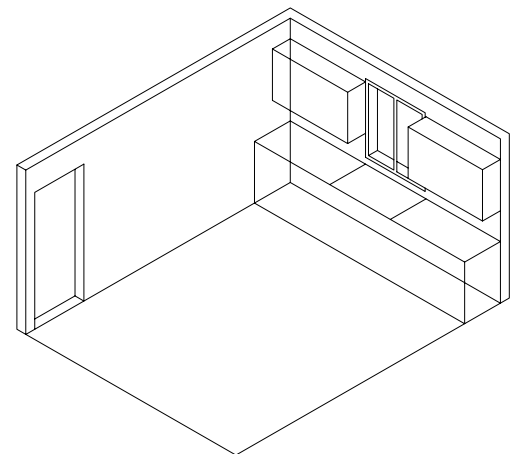
- A. The kitchen cabinets are drawn by first copying the bottom line over 24" and at an angle of 210. The height of the cabinets is 36". *Copy* the last line up 36" at an angle of 90. Draw a *Line* to connect the top of the cabinet to the wall. See Figure AR25-4.
- B. Next draw three *Lines* to represent the side of the top cabinet. The top cabinet is 18" above the bottom cabinet. The total height of the upper cabinet is 2'-6" with a depth of only 12". See Figure AR25-4.

Figure AR25-4



- C. Before the cabinets are finished add the window that is above the sink. The window is centered on the side wall. Select the midpoint at the top of the wall and draw a *Line* straight down. Now *Copy* this line 1'-6" on both sides. The bottom of the window should be 6" above the cabinet and the total height of the window should be 3'-6". See Figure AR25-5.
- D. Continue drawing the cabinets on the wall with the window. Refer to Figure AR25-5.
- E. The cabinets on the other wall of the kitchen do not continue all the way to the door. Include a 2'-8" x 2'-6" x 5'-4" refrigerator that is located 12" from the door.

Figure AR25-5



- F. Continue drawing the upper and lower cabinets. When finished, remove all the lines that would not normally be visible. See Figure AR25-6.
- H. *SaveAs* ISOKITCHEN.DWG.

Figure AR25-6

