

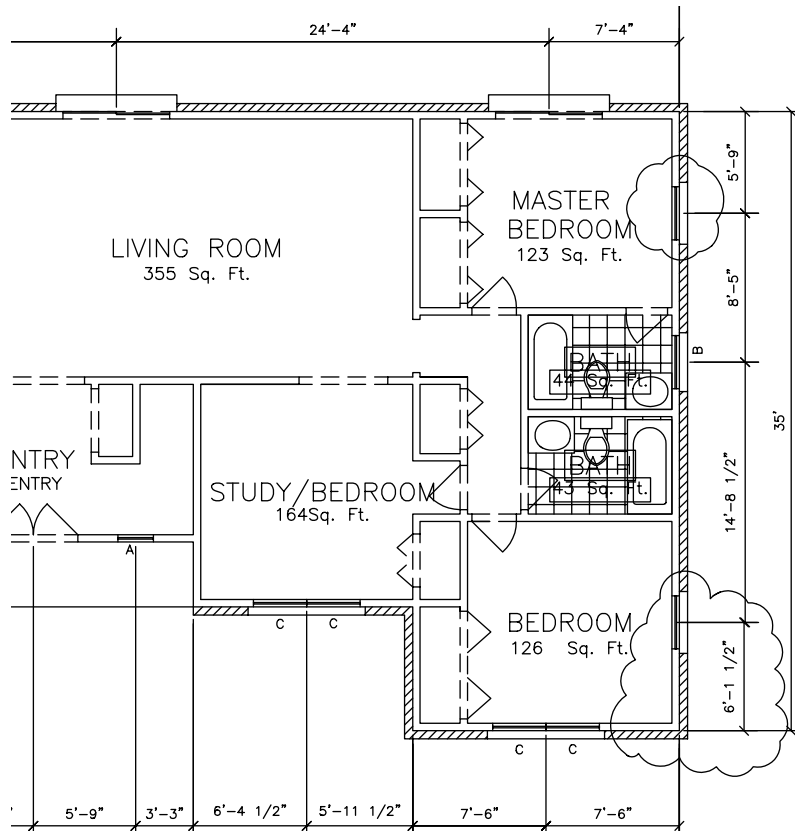
## CHAPTER 47 EXERCISES

### 1. *Revcloud*

Revision clouds are often used in architecture to show modifications made to an existing structure. As the architect, you need to add some additional windows to the PLAN drawing.

- A. *Open* the **PLAN** drawing. Add the two windows on the right side of the house as shown in revision clouds in Figure AR47-1. Add the necessary dimensions.
- B. Finally, use the *Revcloud* command (or *Revision Cloud* option in the *Draw* section under the *Express* pull-down menu) to designate the new windows.

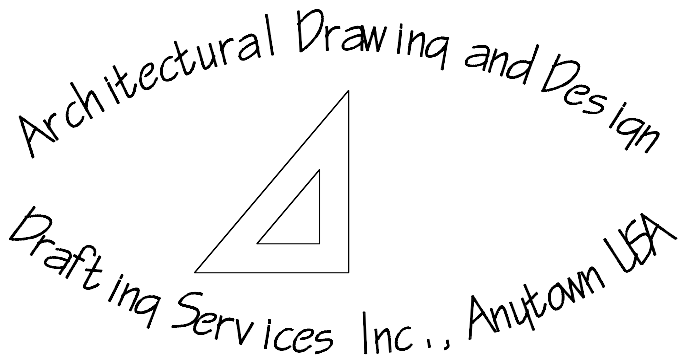
**Figure AR47-1**



### 2. *Arc Aligned Text*

Design your own logo for use on title blocks. Use *Arc Aligned Text* in your design. An example is shown in Figure AR47-2. You can find *Arc Aligned Text* under the *Express* pull-down menu, then *Text*.

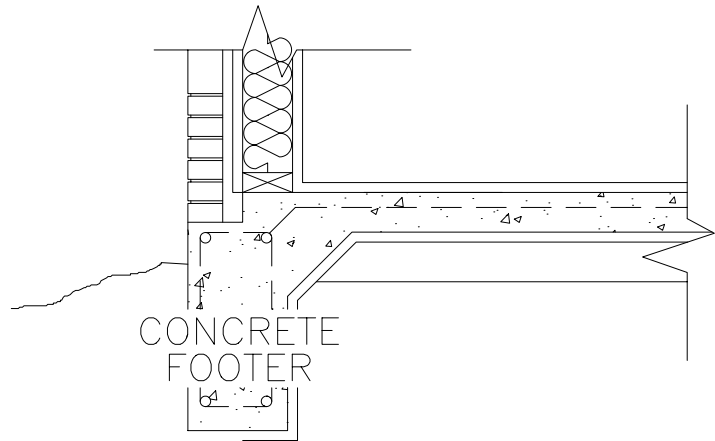
**Figure AR47-2**



3. *Textmask*

*Open* the **WALLSECT** drawing from Chapter 31 Exercises. Add the “Concrete Footer” text to the drawing as shown in Figure AR47-3. Next, use the *Express* menu’s **Text Mask** command to “wipeout” the objects behind the text.

Figure AR47-3

4. **Layer Tools**

- A. *Open* the **PLAN** drawing. *Zoom Extents* to view the entire drawing. From the *Express* pull-down menu, select **Layers**, then *Turn All Layers On (Layon)*. Next, use *Layer Isolate (Layiso)* and select one object in the drawing to isolate its layer. *Turn All Layers On* again.
- B. Using the previous procedure, examine the drawing to locate objects that are not on the correct, or intended, layer. Isolate each layer one at a time and examine its objects. Use the *Layer Match (Laymch)* or *Change to Current Layer (Laycyr)* command to “move” objects to the correct layers. If you have unnecessary layers, use *Layer Merge (Laymrg)* or *Layer Delete (Laydel)* to minimize the layers. *Save* the drawing.
- C. Finally, using the *Layer Manager*, set up three layer states that can be used for creating prints for different clients. Save one layer state to be used for a magazine advertisement of the floor plan showing only the floor plan and text but no dimensions, doors or windows. Specify a descriptive name for the layer state. Secondly, save a layer state displaying the floor plan, text, and dimensions, but no tile or brick. Finally, save a layer state with all layers on. Restore the states to ensure they are created and saved correctly. *Save* the drawing.