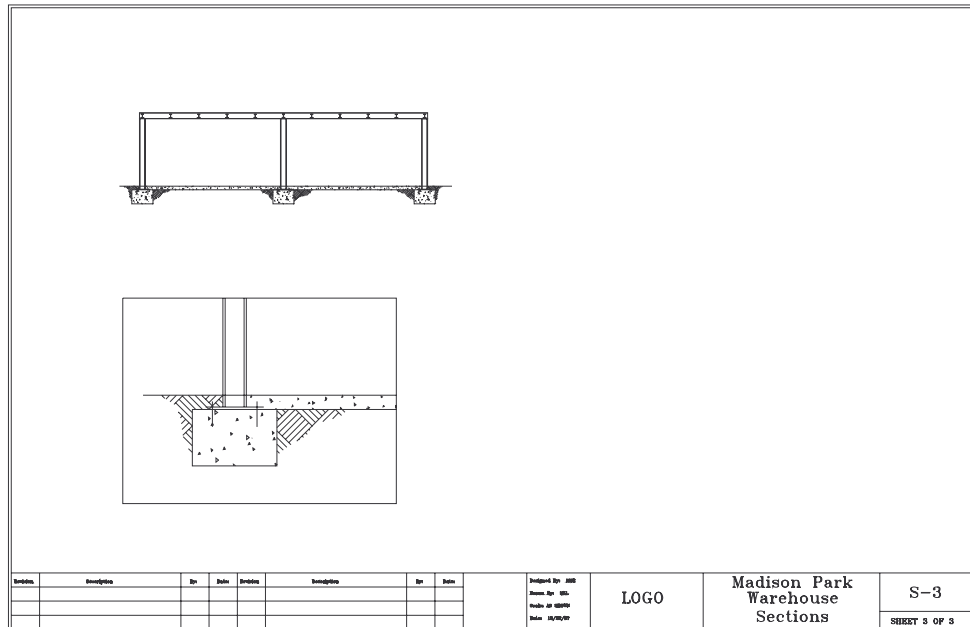


3. Xclip

Open the **FRAMING** drawing from the Chapter 26 Exercises. Use the **Base** command to set a base point near the lower left corner of the drawing. Begin a **New** drawing with **TBLK_D** as the **Template**. **Xref** the **FRAMING** drawing. Use one insertion at scale of **1/48** and one insertion at scale of **1/12**. Set **Xclipframe** to **1**. Use **Xclip** to remove all but the lower left corner of the **FRAMING** drawing as shown in Figure CE30-3. Change **Xclipframe** back to **0**. **SaveAs** CE30EX3.

Figure CE30-3



4. Visretain

Open the **FRAMING** drawing again. **Freeze** the **Hatch** layer and **Save** the changes. *Open* the **CE30EX3** drawing. Notice the changes in the displayed layers compared to the previous exercise. **Set** **Visretain** to **0**. **SaveAs** **CE30EX4**. *Open* the **FRAMING** drawing again and **Thaw** the **Hatch** layer. **Save** changes. *Open* the **CE30EX** drawing. Note the display condition of the layers with the new value for **Visretain**. You may **Close** the drawing without saving.