

## CHAPTER 31 EXERCISES

### 1. Copyclip

*Open* the **CE22EX2** drawing from the Chapter 22 Exercises. Use *Copyclip* to copy the image to the Windows clipboard. Start the **WordPad** program. Type the sentence: "Determine the voltage drop across each resistor in the figure below." Use *Paste* to insert the contents of the clipboard. *Save* the Wordpad file as **CE31EX1**.

### 2. Copy, Pasteclip

Open a new drawing with **TBLK\_D** as the template. You will be creating a cover sheet and inserting general notes onto the sheet. While AutoCAD is running, launch **WordPad** and type the paragraph of notes as shown below.

#### GENERAL NOTES

Building Code: Seattle Building Code

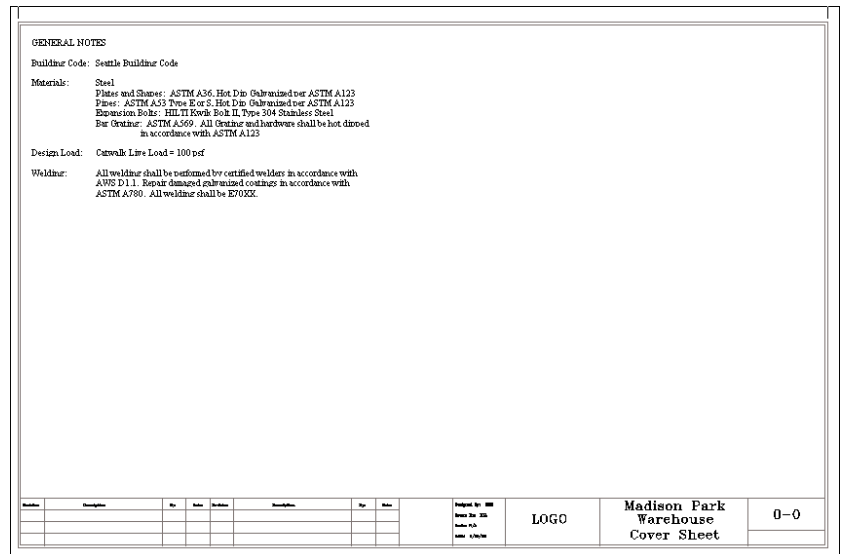
Materials: Steel  
Plates and Shapes: ASTM A36, Hot Dip Galvanized per ASTM A123  
Pipes: ASTM A53 Type E or S, Hot Dip Galvanized per ASTM A123  
Expansion Bolts: HILTI Kwik Bolt II, Type 304 Stainless Steel  
Bar Grating: ASTM A569. All Grating and hardware shall be hot dipped in accordance with ASTM A123

Design Load: Catwalk Live Load = 100 psf

Welding: All welding shall be performed by certified welders in accordance with AWS D1.1. Repair damaged galvanized coatings in accordance with ASTM A780. All welding shall be E70XX.

Next, *Select all* of the text and use the *Copy* command from the *Edit* pull-down menu to copy the text to the clipboard. Return to the new drawing in AutoCAD and use *Pasteclip* to insert the text as shown in Figure CE31-1. You may need to resize the text box to generate appropriately sized text. Edit the text in the titleblock to correspond with the cover sheet. *SaveAs COVER*.

Figure CE31-1



### 3. Editing an Embedded Object

*Open* the **COVER** drawing from the previous exercise. Double-click on the text block to make changes to it in **WordPad**. Change the size of the font for the “General Notes” heading and make the heading and all of the subheadings **bold**. *Exit* WordPad and notice the changes that are reflected in the AutoCAD drawing. *SaveAs COVERSHT*.

### 4. Multiple Diagrams

Open **WordPad** and type the following sentences: “The diagram below shows the proposed layout of the septic system on the property in question. A schematic representation of the septic tank is also provided.” Use *Copylink* to insert the drawings **CE18EX3** and **CE26EX2** as shown in Figure CE31-2.

Figure CE31-2

The diagram below shows the proposed layout of the septic system on the property in question. A schematic representation of the septic tank is also provided.

