

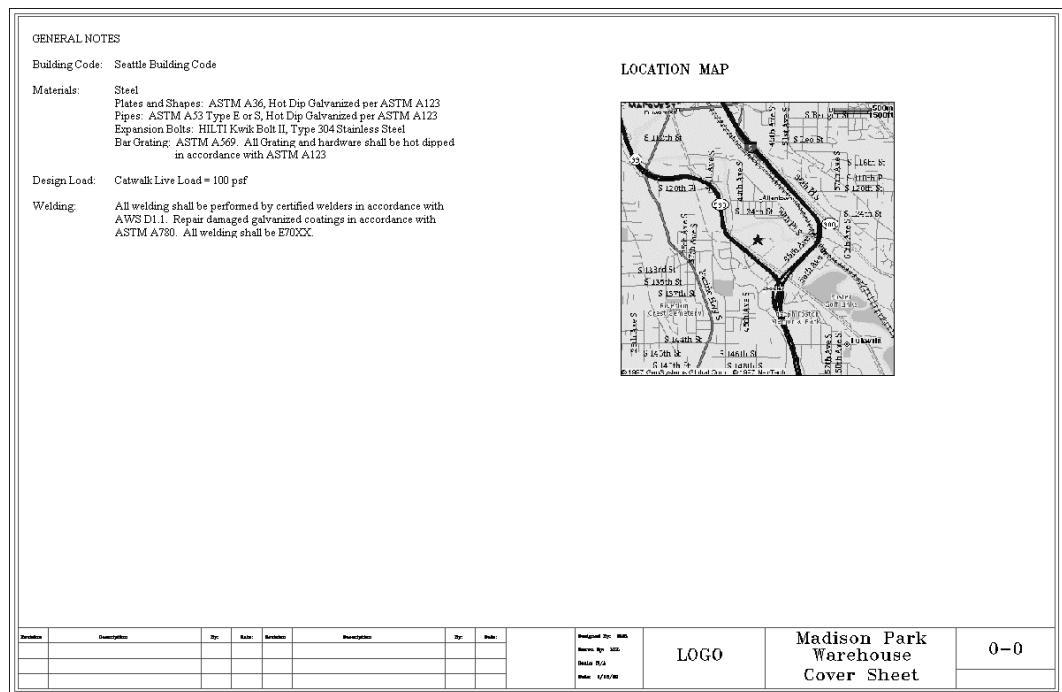
CHAPTER 32 EXERCISES

For the following exercises you will need a .JPG, .BMP, or .GIF file of a map. Preferably this map would be of an area you are familiar with. Your instructor may provide one for you or you may want to download the image file from a web site such as Yahoo (www.yahoo.com) which will generate maps based on an address that you enter into the web page. Once the graphic of the map is displayed, you can right-click on the image to save it.

1. Attaching a Raster Image

Open the **COVERSHT** drawing from the Chapter 31 exercises. Use the **ImageAttach** command to attach the location map to the cover sheet (Fig. CE32-1). Label the map using the **Text** command and **RomanT** style. **SaveAs CE32EX1**.

Figure CE32-1



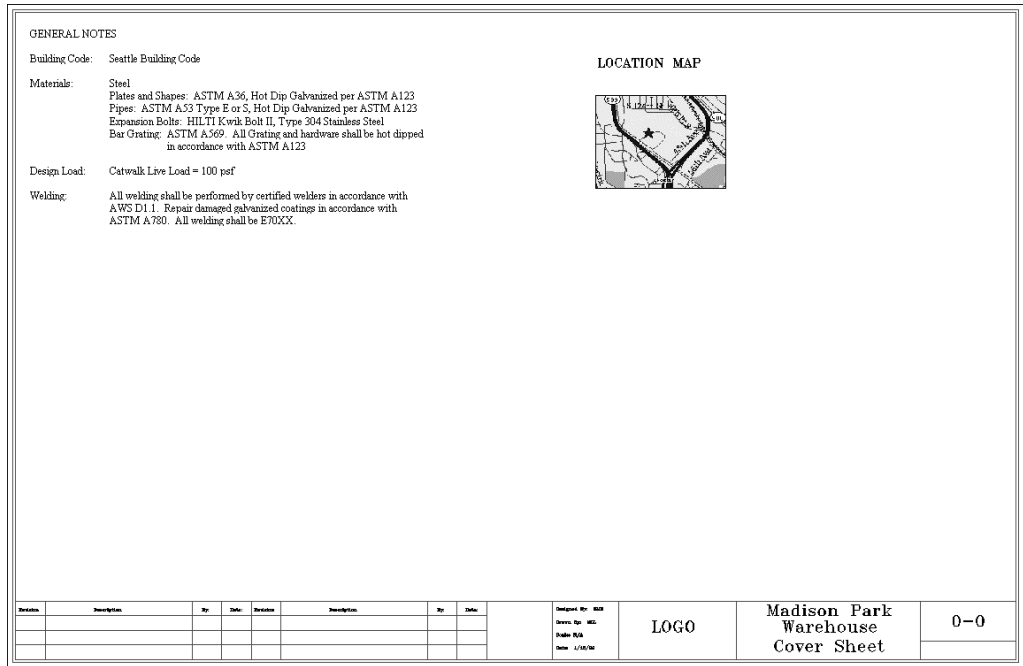
2. Adjusting a Raster Image

Continue working on the drawing from the previous exercise. Use the **ImageAdjust** command to increase the **Contrast** and decrease the **Brightness** of the image so that the roads and labels show up more clearly and the background fades out. **SaveAs CE32EX2**.

3. Cropping a Raster Image

Continue working on the drawing from the previous exercise. Use the *ImageClip* command to clip the image in to a closer view of the area you want to show (Fig. CE32-2). You can then use the *Scale* command to enlarge the image to a more visible size. *SaveAs CE32EX3*.

Figure CE32-2



4. Adding Text Over a Graphic

Figure CE32-3

Open the drawing **CE32EX2** from the exercise you completed earlier. Use the *ImageAdjust* again to increase the *Fade* on the object. Draw a *Leader* from the location of the site on the map and label it with the street address. Use the *DrawOrder* command to move the raster image to the back and allow the leader information to be shown in front (Fig. CE32-3). *SaveAs CE32EX4*.

