

CHAPTER 18 EXERCISES

1. Bill of Materials

Open the BOM drawing from Chapter 15 Exercise 3. Modify the *Lines* and add all *Text* as shown in Figure ME18-1. Use *Romans* font and a height of .125. SaveAs BOM2.

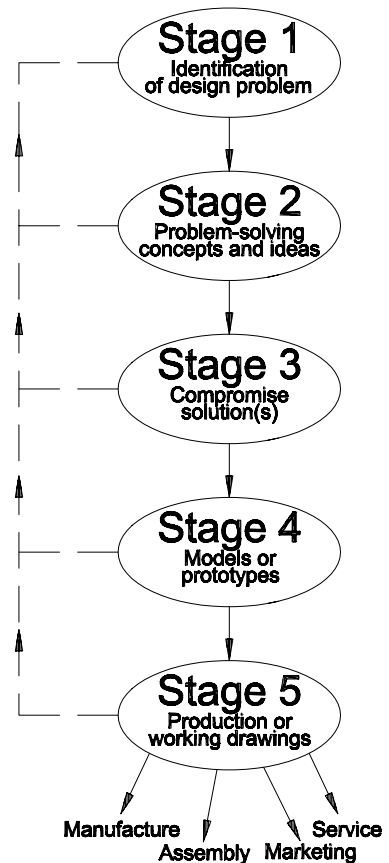
Figure ME18-1

ITEM	QTY.	NAME	MATERIAL
1	3	HEX HEAD MACHINE SCREW	X
2	1	FIXTURE	STEEL
3	1	MIDPIECE	STEEL
4	2	SUPPORT	STEEL
5	1	3/16 SPRING SCREW	X
6	1	BRACE	STEEL
7	2	ARM	STEEL

2. Diagram of the Design Process

Complete the diagram of the design process shown in Figure ME18-2. Use the *Style* command to change the font to *Arial*, and use any convenient size. Use the *Pline* command with different *Starting* and *Ending Widths* to create the arrow-heads. Save the drawing as CH18EX2-M.

Figure ME18-2



3. General Notes

Using the Windows Notepad, create the following set of general notes:

NOTES:

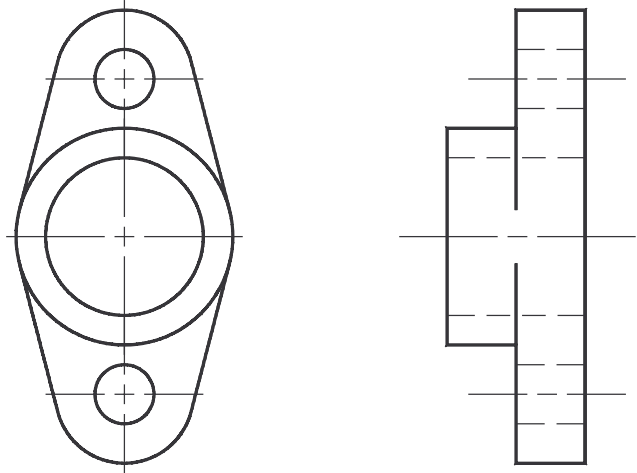
4. FINISH ALL OVER.
3. BREAK SHARP EDGES TO R.08.
2. G33106 ALLOY STEEL – BRINELL 340-380.
1. ALL DRAFT ANGLES 3° UNLESS OTHERWISE SPECIFIED.

Save the text file as NOTES.TXT.

4. Importing External Text into AutoCAD

Open the packing gland drawing completed as **CH12EX1-M**. Use the *Mtext* command and select the *Import Text* button. Select the **NOTES.TXT** file created in exercise 3 and import the text as shown in Figure ME18-3. *Save* the drawing as **CH18EX4-M**.

Figure ME18-3



NOTES:

4. FINISH ALL OVER.
3. BREAK SHARP EDGES TO R.08.
2. G33106 ALLOY STEEL - BRINELL 340-380.
1. ALL DRAFT ANGLES 3° UNLESS OTHERWISE SPECIFIED.