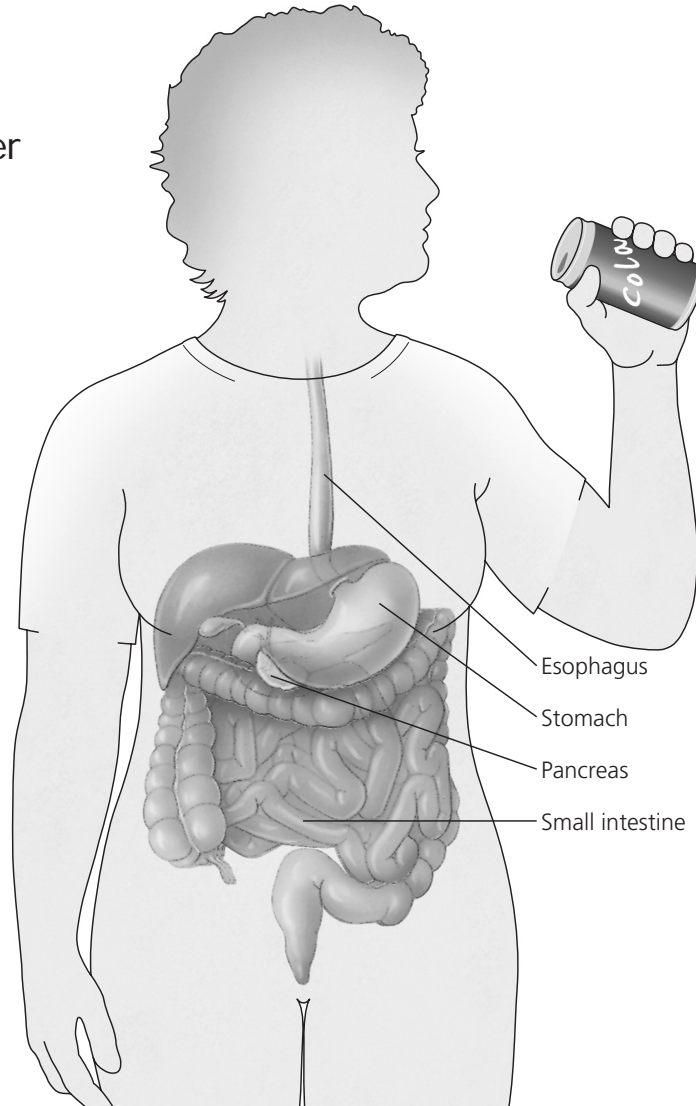


H6-4 Symptoms and Effects of Diabetes

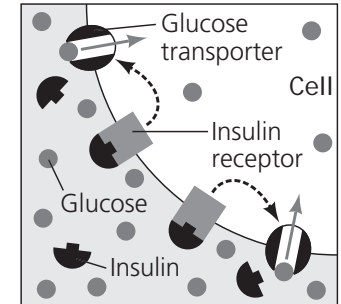
Symptoms of diabetes:

- Frequent urination
- Extreme thirst and hunger
- Unexplained weight loss
- Extreme fatigue
- Blurred vision
- Frequent infections
- Slow wound healing
- Tingling or numbness in hands and feet
- Dry, itchy skin



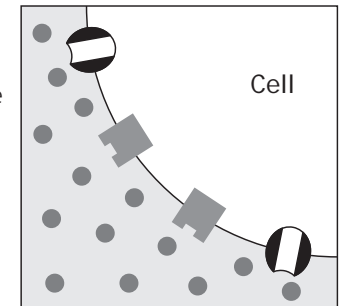
Normal:

Insulin binds to receptors on the surface of a cell and signals special transporters in the cell to transport glucose inside.



Type 1 diabetes:

The pancreas produces little or no insulin. Thus, no signal is sent instructing the cell to transport glucose, and glucose builds up in the bloodstream.



Type 2 diabetes:

The pancreas produces too little insulin and/or the body's cells are resistant to it. Some insulin binds to receptors on the cell's surface, but the signal to transport glucose is blocked. Glucose builds up in the bloodstream.

