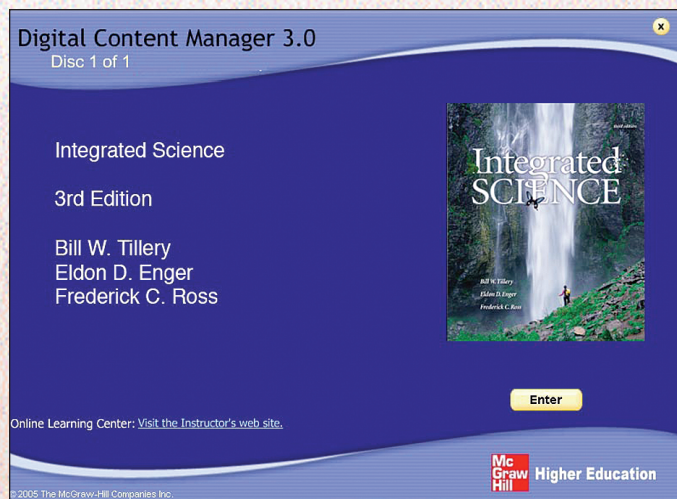


## Multimedia Supplements

### Digital Content Manager CD

Electronic art at your fingertips! This cross-platform CD ROM provides you with visuals from the text in multiple formats. You can easily create customized classroom presentations, visually based tests and quizzes, dynamic content for a course website, or attractive printed support materials. Available on this CD are the following resources in digital formats. These items have also been placed into PowerPoint files for ease of use:

- **Art and Photo Library:** Full-color digital files of all of the illustrations and many of the photos in the text can be readily incorporated into lecture presentations, exams, or custom-made classroom materials.
- **Worked Example Library and Table Library:** Access the worked examples and tables from the text in electronic format for inclusion in your classroom resources.
- **Animations Library:** Files of animations and videos covering various topics are included so that you can easily make use of these animations in a lecture or classroom setting.
- **Lecture Outlines:** Lecture notes, incorporating illustrations and animated images, have been written to the third edition text. They are provided in PowerPoint format so that you may use these lectures as written or customize them to fit your lecture.



### Classroom Performance System

The **Classroom Performance System (CPS)** by eInstruction brings interactivity into the classroom or lecture hall. It is a wireless response system that gives the instructor and students immediate feedback from the entire class. The wireless response pads are essentially remotes that are easy to use and engage students. CPS allows instructors to motivate student preparation, interactivity, and active learning. Instructors receive immediate feedback to gauge which concepts students understand. Questions covering the content of the *Integrated Science* text and formatted for the CPS eInstruction software are available on the *Integrated Science* Online Learning Center.

### Online Learning Center

The **Online Learning Center** is an online repository for teaching and learning aids for the *Integrated Science* text. It houses downloadable and printable versions of traditional ancillaries plus a wealth of online content in an instructor's edition and a student edition.

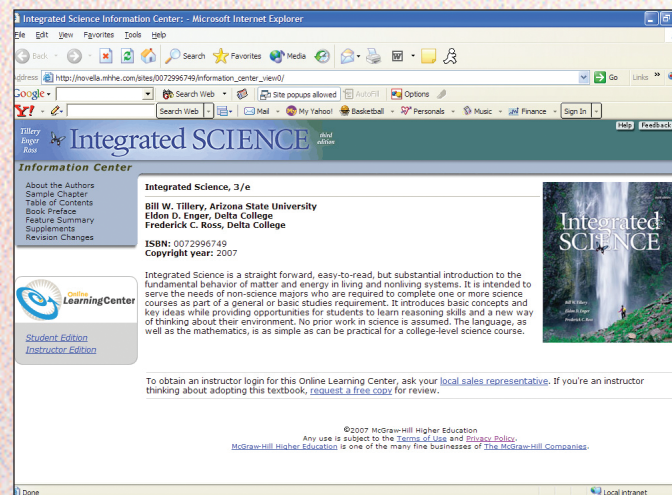
#### *Instructor's Edition of the Online Learning Center:*

The text-specific Online Learning Center includes the fully downloadable instructor's manual. The instructor's manual, written by the text authors, provides chapter outlines, an introduction and summary for each chapter, suggestions for discussion and demonstrations, and multiple-choice questions (with answers) that can be used as resources for cooperative learning. It also includes answers and solutions to all end-of-chapter questions and exercises not provided in the text. Additionally, the instructor's edition of the online learning center features integration theme ideas and syllabi contributed by instructors who are presently teaching the *Integrated Science* course across the country.

The Online Learning Center also contains the instructor's edition of the lab manual, visuals from the text in jpeg format, over two hundred animations, questions for use with personal response systems, a feedback page, and many other features.

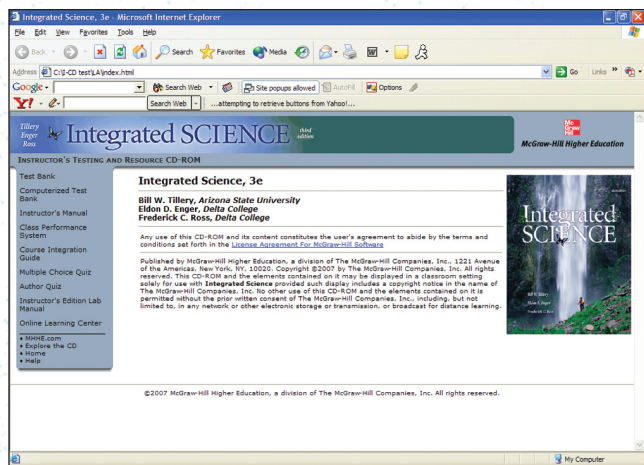
#### *Student Edition of the Online Learning Center:*

Students can use the Online Learning Center to study in a variety of ways, including: scorable practice quizzes, additional self-assessment quizzes, animations, puzzles and flashcards that use key terms and definitions from the text, an online glossary, a career center, and web links.



### Instructor's Testing and Resource CD-ROM

The **Instructor's Testing and Resource CD-ROM** contains the *Integrated Science* test bank (over seven hundred test questions in a combination of true/false and multiple choice formats) within McGraw-Hill's EZ Test testing software. EZ Test is a flexible and easy-to-use electronic testing program. The program allows instructors to create tests from book specific items. It accommodates a wide range of question types and instructors may add their own questions. Multiple versions of the test can be created and any test can be exported for use with course management systems such as WebCT, BlackBoard or PageOut. EZ



Test Online is a new service and gives you a place to easily administer your EZ Test created exams and quizzes online. The program is available for Windows and Macintosh environments. Also located on the Instructor's Testing and Resources CD-ROM are Word and PDF files of the test bank, the instructor's manual, the instructor's edition lab manual quizzes from the Online Learning Center, and personal response system questions. The Word files for the test bank, instructor's manual, Online Learning Center quizzes, and personal response system questions can be used in combination with the testbank software or independently.

## Printed Supplementary Materials

### Laboratory Manual

The laboratory manual, written and classroom-tested by the authors, presents a selection of laboratory exercises specifically written for the interest and abilities of nonscience majors. Each lab begins with an open-ended “*Invitations to Inquiry*,” designed to pique student interest in the lab concept. This is followed by laboratory exercises that require measurement and data analysis for work in a more structured learning environment. When the laboratory manual is used with *Integrated Science*, students will have an opportunity to master basic scientific principles and concepts, learn new problem-solving and thinking skills, and understand the nature of scientific inquiry from the perspective of hands-on experiences. There is also an **instructor's edition lab manual** available on the *Integrated Science* Online Learning Center and Instructor's Testing and Resource CD-Rom.

### Transparencies

A set of one hundred full-color transparencies features images from the text. The images have been modified to ensure maximum readability in both small and large classroom settings..