

Chapter 2

ELEMENTS OF RHYTHM

EXERCISE 2-1

A. Show how many notes or rests of the shorter duration would be required to equal the longer duration.

ex. $\text{♩} \times \underline{2} = \text{♩}$

1. $\text{♩} \times \underline{\quad} = \text{♩}$

2. $\text{♪} \times \underline{\quad} = \text{♩}$

3. $\text{♪} \times \underline{\quad} = \text{♩}$

4. $\text{♩} \times \underline{\quad} = \text{♩}$

5. $\text{♩} \times \underline{\quad} = \text{♩}$

6. $\text{♩} \times \underline{\quad} = \text{♩}$

7. $\text{♩} \times \underline{\quad} = \text{♩}$

8. $\text{♪} \times \underline{\quad} = \text{♩}$

9. $\text{♩} \times \underline{\quad} = \text{♩}$

10. $\text{♩} \times \underline{\quad} = \text{♩}$

11. $\text{♩} \times \underline{\quad} = \text{♩}$

12. $\text{♩} \times \underline{\quad} = \text{♩}$

13. $\text{♩} \times \underline{\quad} = \text{♩}$

14. $\text{♩} \times \underline{\quad} = \text{♩}$

15. $\text{♩} \times \underline{\quad} = \text{♩}$

16. $\text{♩} \times \underline{\quad} = \text{♩}$

B. Sing aloud each of the following songs. Then identify the meter type of each, using the terms *duple*, *triple*, and *quadruple*.

1. "Auld Lang Syne" _____

2. "Star-Spangled Banner" _____

3. "Pop Goes the Weasel" _____

4. "America" ("My Country, 'Tis of Thee") _____

5. "Swing Low, Sweet Chariot" _____

C. Scale review. Fill in the blanks, using the melodic minor for all minor-key examples.

ex. $\hat{6}$ is $F\sharp$ in \underline{A} (M)

1. $\downarrow\hat{7}$ is C in _____ (m)

2. $\hat{4}$ is _____ in $c\sharp$

3. _____ is A in F

4. $\hat{5}$ is $C\sharp$ in _____ (m)

5. $\hat{2}$ is _____ in E

6. $\hat{7}$ is A in _____ (M)

7. $\downarrow\hat{6}$ is _____ in c

8. _____ is $C\sharp$ in b

9. $\hat{6}$ is C in _____ (M)

10. _____ is $F\sharp$ in g

11. $\hat{4}$ is G in _____ (M)





12. $\hat{5}$ is _____ in G

13. _____ is $A\flat$ in f

14. $\uparrow\hat{6}$ is $C\sharp$ in _____ (m)

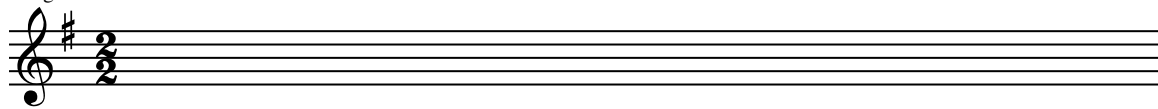
EXERCISE 2-2

A. Fill in the blanks.

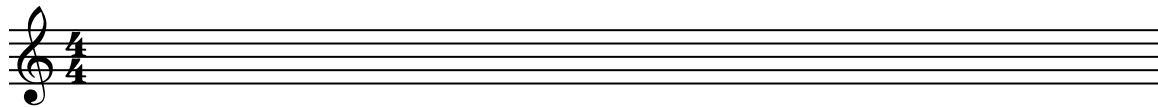
	<i>Beat and Meter Type</i>	<i>Beat Note</i>	<i>Division of the Beat</i>	<i>Time Signature</i>
1.				C
2.	Simple triple			
3.	Simple duple			
4.				2
5.	Simple quadruple			

B. Renotate the excerpts from textbook Example 2-1 using the specified time signatures.

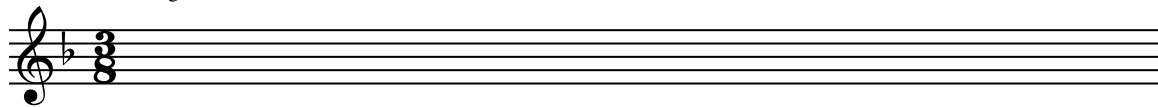
“Jingle Bells”



“America the Beautiful”







“Home on the Range”



EXERCISE 2-3

A. Fill in the blanks.

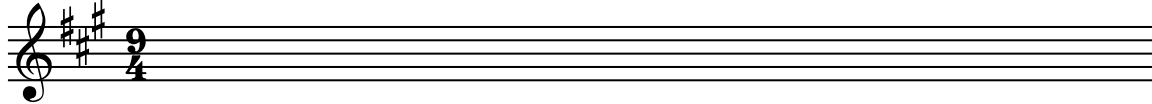
	<i>Beat and Meter Type</i>	<i>Beat Note</i>	<i>Division of the Beat</i>	<i>Time Signature</i>
1.	Compound triple			
2.				6 16
3.				12
4.	Compound duple			
5.				9

B. Renotate the excerpts from textbook Example 2-2 using the specified time signatures.


“Take Me Out to the Ball Game”



“Down in the Valley”









“Pop Goes the Weasel”













EXERCISE 2-4

A. Fill in the blanks.

	<i>Beat and Meter Type</i>	<i>Beat Note</i>	<i>Division of the Beat</i>	<i>Time Signature</i>
1.	Compound quadruple			
2.	Simple triple			
3.				4
4.				6
5.				
6.				9

B. Each measure below is incomplete. Add one or more rests to complete the measure.

1. $\frac{6}{4}$ 		7. 	
2. C 		8. $\frac{9}{4}$ 	
3. $\frac{2}{16}$ 		9. $\frac{3}{2}$ 	
4. $\frac{12}{16}$ 		10. $\frac{12}{8}$ 	
5. $\frac{3}{8}$ 		11. $\frac{4}{8}$ 	
6. $\frac{9}{8}$ 		12. $\frac{6}{4}$ 	

E. Add stems as required.

1. Each duration is a half note.



2. Each duration is a sixteenth note. Beam them in groups of four.



F. Scale review. Fill in the key, scale degree, or note, whichever is missing. Assume the melodic minor form for all minor keys.

ex. 1 2 3 4

D: 3 _____ (m) $\sharp 7$ F: $\hat{4}$ c: _____ A: $\hat{2}$

5 6 7 8 9

_____ (m) $\sharp 7$ d: $\hat{4}$ Eb: _____ f: $\sharp 6$ _____ (m) $\hat{3}$

10 11 12 13 14

Bb: _____ _____ (M) $\hat{6}$ g: $\sharp 6$ b: _____ _____ (M) $\hat{5}$

G. Interval review. Notate the specified interval above the given note.

1 2 3 4 5 6 7 8 9

M6 +4 M2 M3 m6 $\circ 7$ M7 +2 P5

H. Interval review. Notate the specified interval below the given note.

1 2 3 4 5 6 7 8 9

$\circ 5$ m6 m7 P4 M3 M7 m2 P5 +6

